



GAT MONTHLY MEMBERSHIP PROGRESS REPORT

Results as of: 12/31/2022

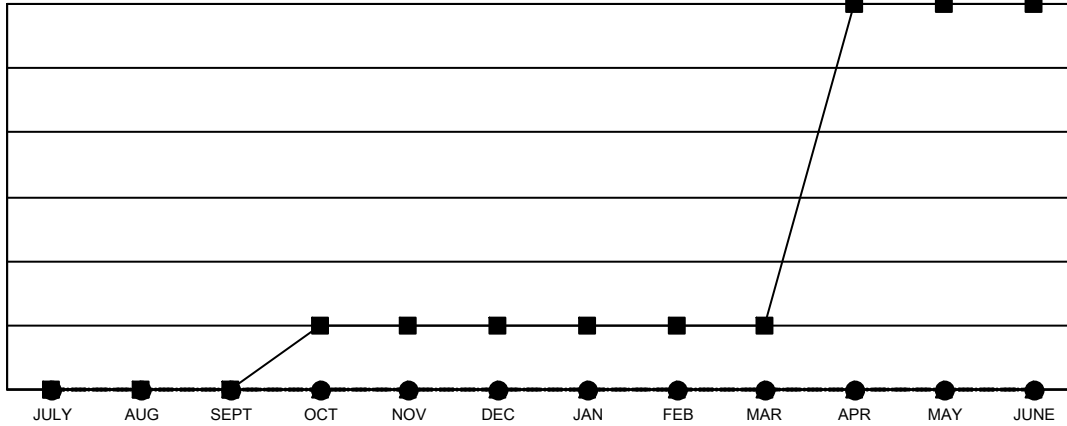
Multiple District 202

LOCATION: NEW ZEALAND

Clubs			
RESULTS FOR 2022-2023			
QUARTER	NEW CLUB GOAL	NEW CLUBS	DROPPED CLUBS
JULY/AUG/SEPT	0	0	3
OCT/NOV/DEC	1	0	2
JAN/FEB/MAR	0	0	0
APR/MAY/JUNE	5	0	0

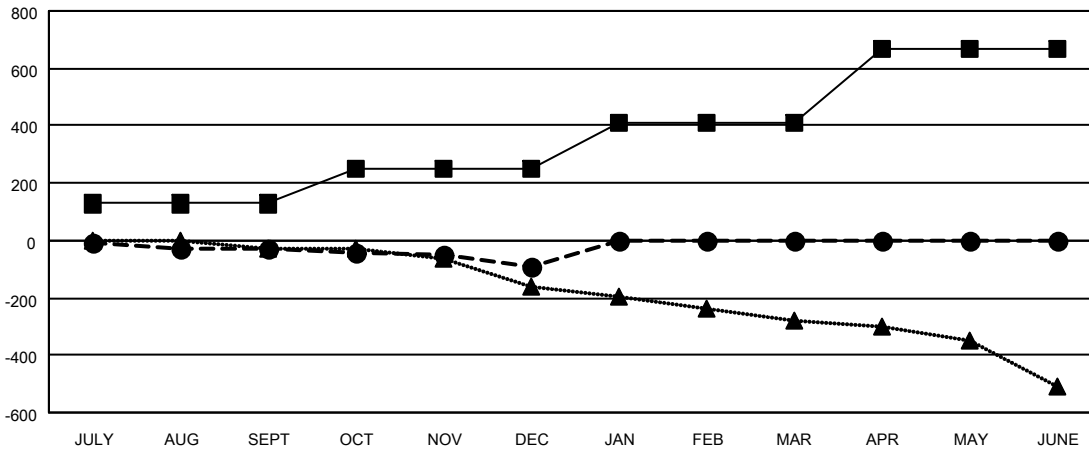
Members			
RESULTS FOR 2022-2023			
QUARTER	MEMBER GROWTH NET GOAL	MEMBER GROWTH ACTUAL	DROPPED MEMBERS ACTUAL (including transfers)
JULY/AUG/SEPT	128	160	161
OCT/NOV/DEC	123	166	216
JAN/FEB/MAR	157	0	0
APR/MAY/JUNE	257	0	0

GOALS AND ACTUAL NEW CLUBS CUMULATIVE



- CURRENT YEAR GOALS FOR NEW CLUBS
- CURRENT YEAR ACTUAL NEW CLUBS
- ▲- LAST YEAR ACTUAL NEW CLUBS

GOALS AND ACTUAL MEMBERS CUMULATIVE



- MEMBER GROWTH NET GOAL
- MEMBER GROWTH ACTUAL
- ▲- LAST YEAR MEMBERSHIP ACTUAL

DROPPED CLUBS: 5	140 CLUBS OF 310 ADDED 1 OR MORE NEW MEMBERS	GENDER DISTRIBUTION
DROPPED MEMBERS	CLICK HERE FOR CUMULATIVE MEMBERSHIP DATA	MALE 5,419 (67.63%)
DECEASED 72		FEMALE 2,593 (32.36%)
CLUB CANCELLED 19		NON BINARY 1 (0.01%)
OTHER 289		PREFER NOT TO ANSWER 0 (0.00%)
TOTAL 380		TOTAL FAMILY UNIT MEMBERS 758
		FAMILY MEMBERS PAYING HALF DUES 382